

1 INTRODUCTION

SOFTWARE SCRRENSHOT

Position Maker

CordX/Y -> 1p

VirtualMode

- All Modify
- All Reset Hrd
- Module
- DVD
 - BL01 [8,1,224]
 - BL02 [8,225,656]
 - BL03 [8,657,880]
 - BL04 [8,881,1312]
 - Home Position
 - Returning Box
 - Single Position
- VHS
 - Home Position
 - Single Position

NPos	AxisX	AxisY	Side
0	399161	336422	AHOME
1	805700	918220	P
2	671015	918062	P
3	536330	917905	P
4	401645	917748	P
5	266961	917590	P
6	132276	917433	P
7	-2408	917276	P
8	-137093	917119	P
9	805664	901578	P
10	670979	901420	P
11	536294	901263	P
12	401610	901106	P
13	266925	900949	P
14	132240	900791	P
15	-2443	900634	P
16	-137128	900477	P
17	805630	884820	P

2000

2 FUNCTION AND COMMAND

2.1 SOFTWARE FUNCTION

VirtualMode

If the flag is checked the software can check the syntax of the configuratib files (positions files)

All Reset Hrd: reset of the machine

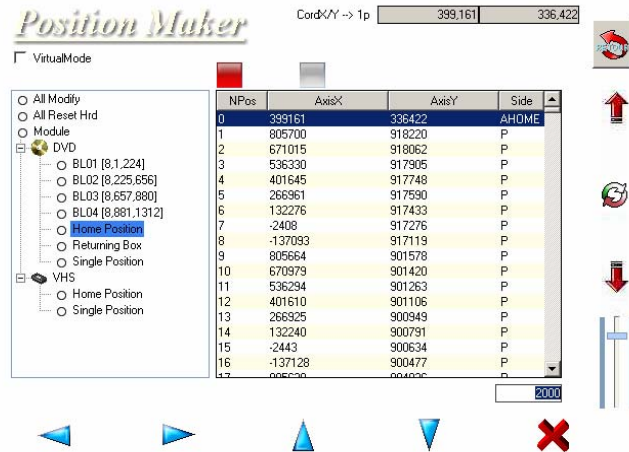
Module: virtual blocks module

BLxx [x,x,x]: block for regulation with 3 points

Home Position: zero position (where the product go out)

Returning Box: returnnig Box position

Single Position: regulation of a single position



Coordinate of the axes during the 3 points regulations

Table with all the positions of the active file (DVD, VHS, BO1...)

Keyboard keys for use the software (F6 – F7 – F8 – F9 – ESC)

Command for move the dispenser during the regulation (F1 – F2 – F5 – F3 – F4)

2.2 SOFTWARE COMMANDS



Try a pick and place of the product

F1



Go up the table of positions

F2



Confirm

F5



Go down the table of positions

F3



Sensibility of the regulation

F4



Move the dispenser to the left

F6



Move the dispenser to the right

F7



Move the dispenser to the top

F8



Move the dispenser to the bottom

F9



Esc from regulation

ESC

3 HOW USE THE SOFTWARE

Is very important that before using the regulation routine the machine is restarted, so select **All Reset Hrd** and press **F5** for confirm the operation.

3.1 REGULATION WITH 3 POINTS

This routine is used for the regulation of the position of each block by check only 3 positions (UP left, UP right, BOTTOM right).

Steps for use the routine:

1. Start the checkposition software
2. Select the correct block (es. BL01 [8,1,224])
3. Press the confirm key (F5)
4. The machine now go to the first position of the block, position "1" (UP left)
5. Move the machine using the keys (F6 – F7 – F8 – F9) and try the position with a correct product (F1)
6. Confirm the position (F5)
7. The machine now go to the "next" position (UP right), follow the "STEP 5" for the 3 positions

3.2 REGULATION OF SINGLE POSITION

This routine is used for the regulation of a single position, the home position and the returning box position.

Steps for use the routine:

1. Make the selection to the left side of the table : Single Position, Home Position or Returning Box (for the "Single Position" option you must select the number op position after the confirm with the keys F2 F3)
2. Confirm for move the machine near the selected position
8. Move the machine using the keys (F6 – F7 – F8 – F9) and try the position with a correct product (F1)
3. Confirm the position (F5)